

**SCHEMATIC
DIAGRAM**

1011 1111

FEMALE CONNECTOR SYMBOL (es. J 2/1)



PLUG IN CONNECTOR SYMBOL



WIRE SOLDERING POINT



TEST POINT (T P...)



CONNECTING POINT (ON p.c.b.)



METALLIC FILM RESISTOR 1%



ALL resistors 1/4w unless otherwise indicated

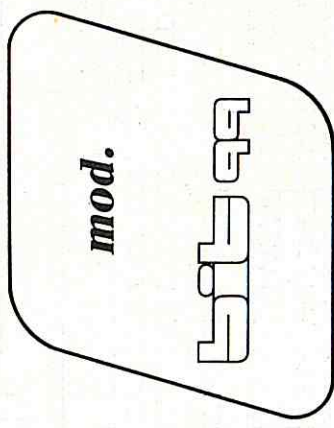
ALL tabswitches shown in OFF position

ALL keyswitches shown in OFF position

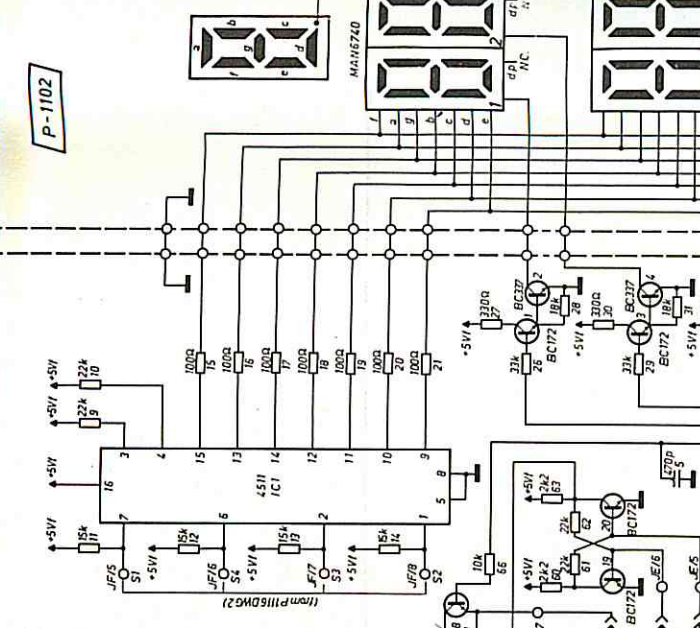
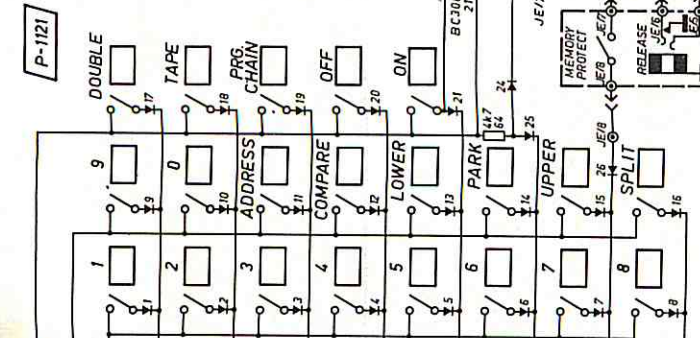
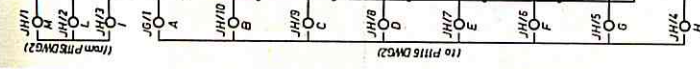
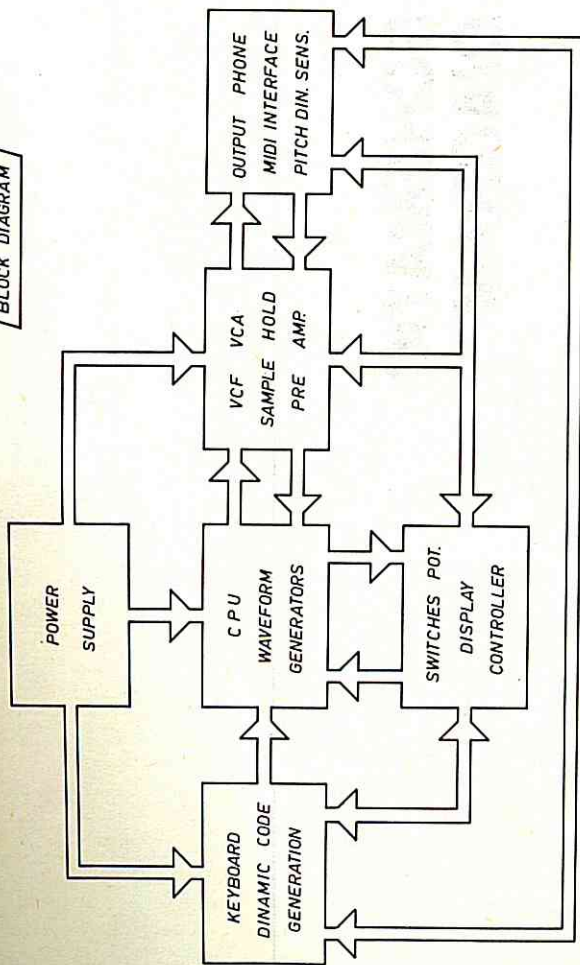
See part list for component part numbers

BIT RESERVES THE RIGHT TO CHANGE
SPECIFICATIONS AND DESIGNS, WITHOUT
NOTICE AND LIABILITY.

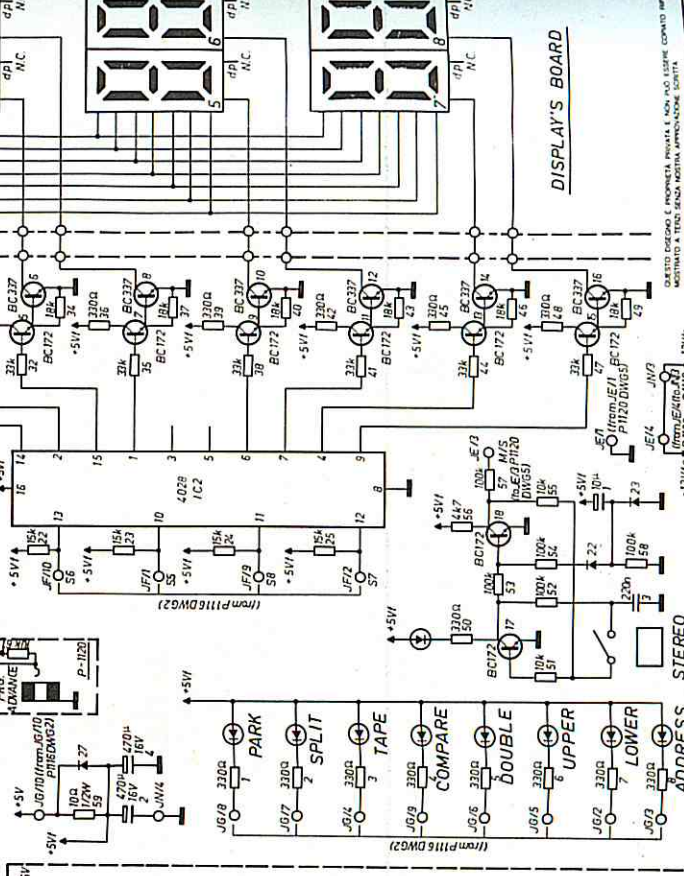
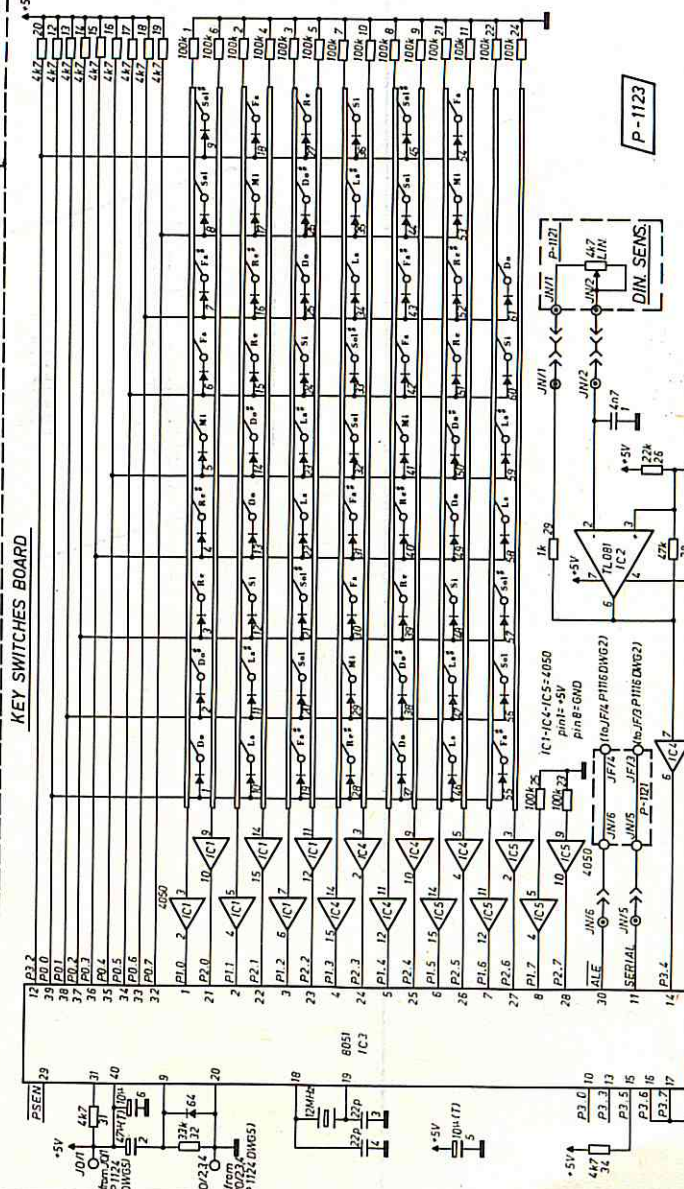
**SCHEMATIC
DIAGRAM**



BLOCK DIAGRAM



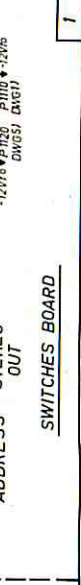
KEY SWITCHES BOARD



P-1123



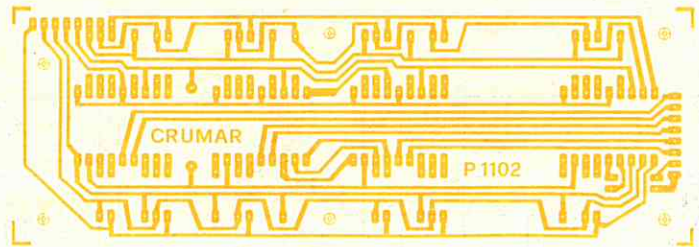
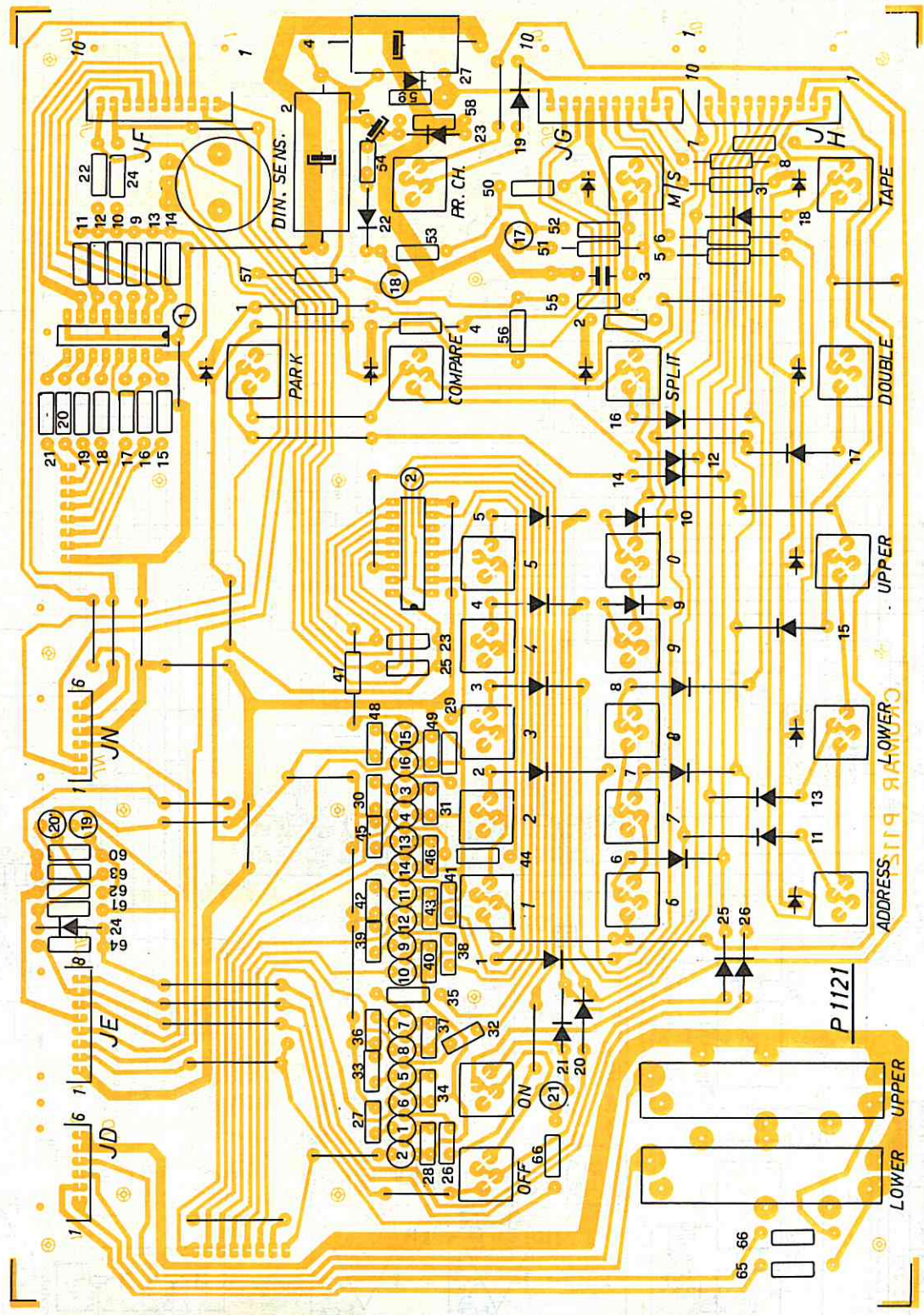
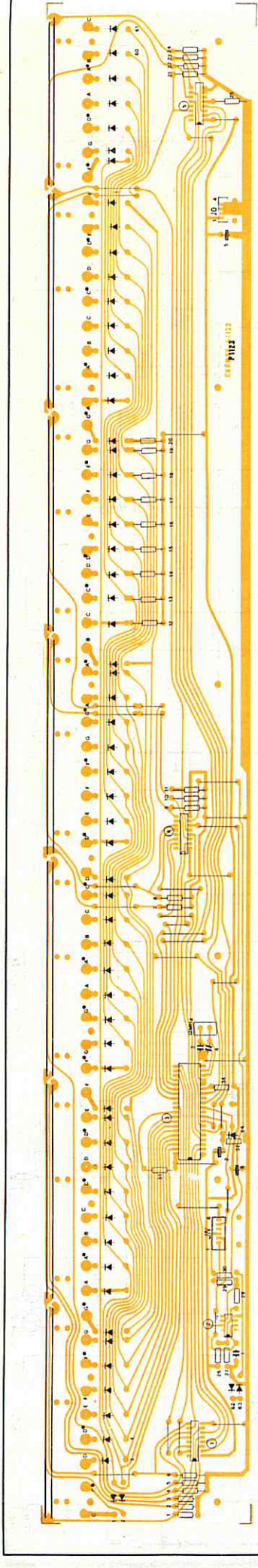
DISPLAY'S BOARD

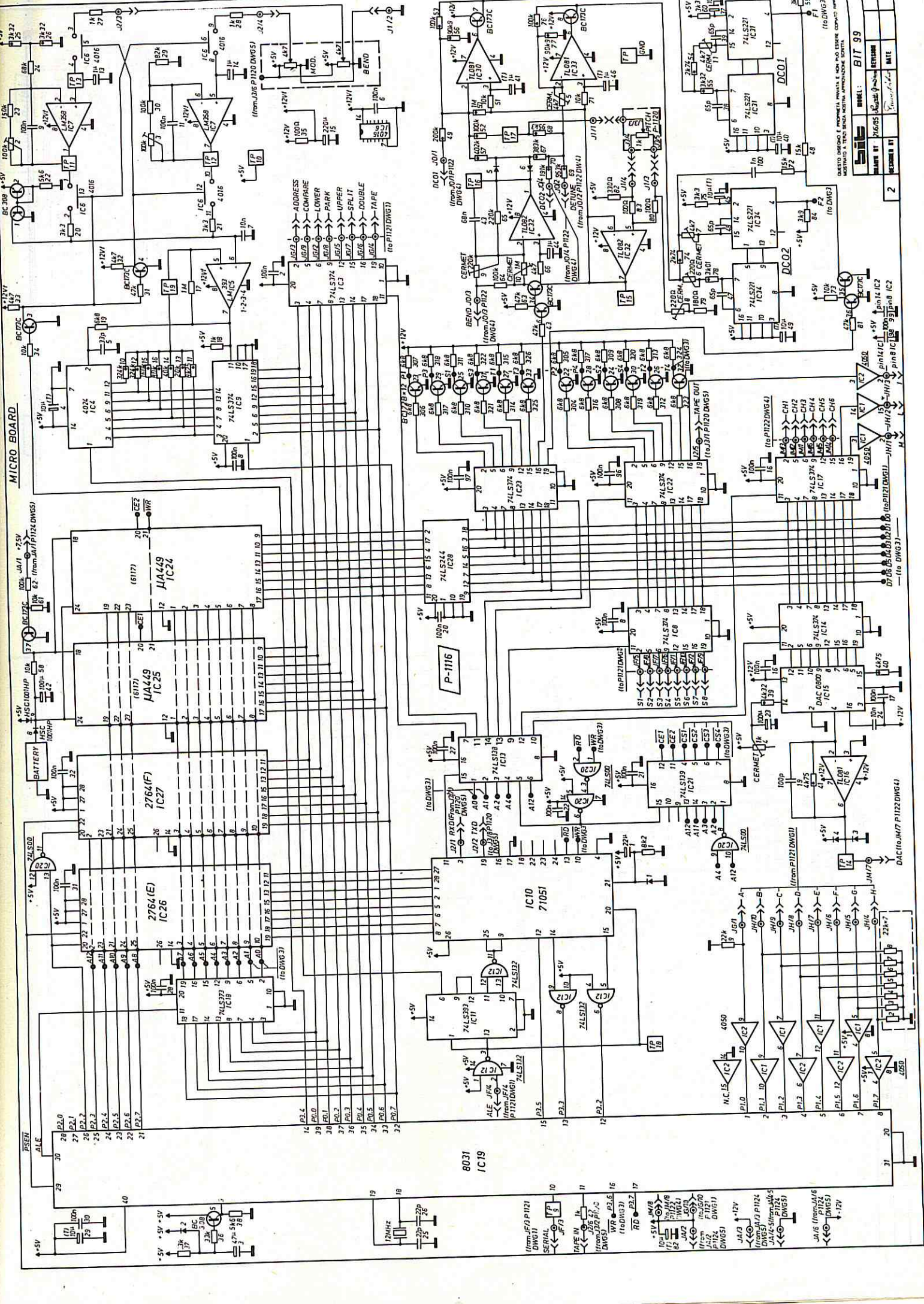


SWITCHES BOARD



DESTINO DESIGN E PRODOTTO PRIVATA E NON HA UNO SCHEMI COSTRUTTO IN TUTTI I TIPOI DI SCHEMI APPROVATI

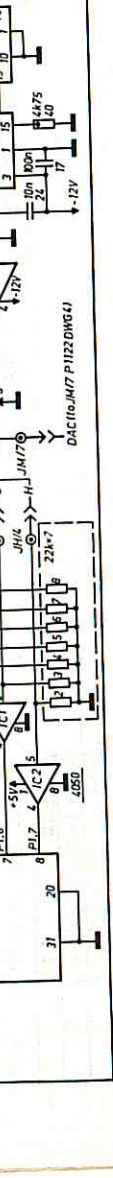


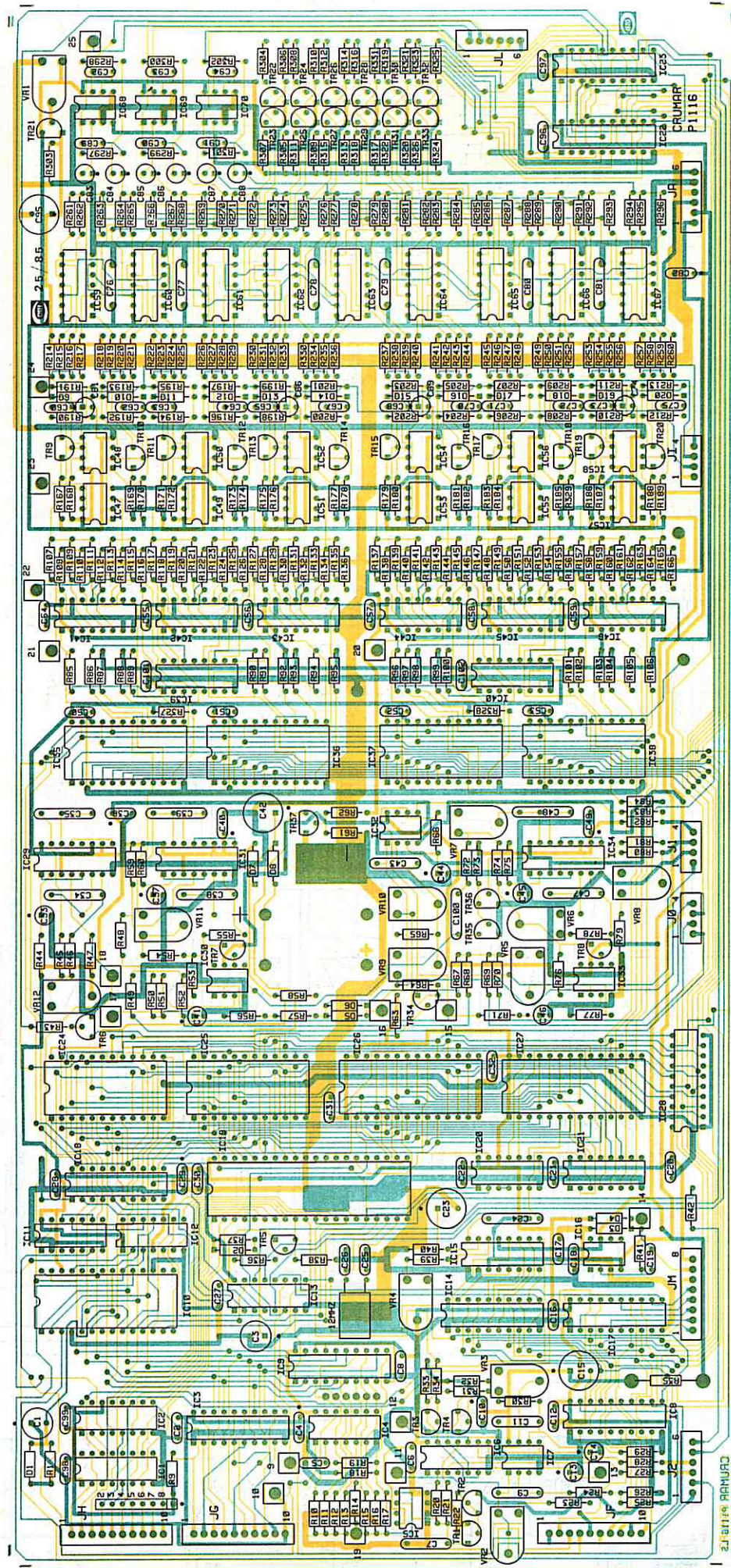


MICRO BOARD

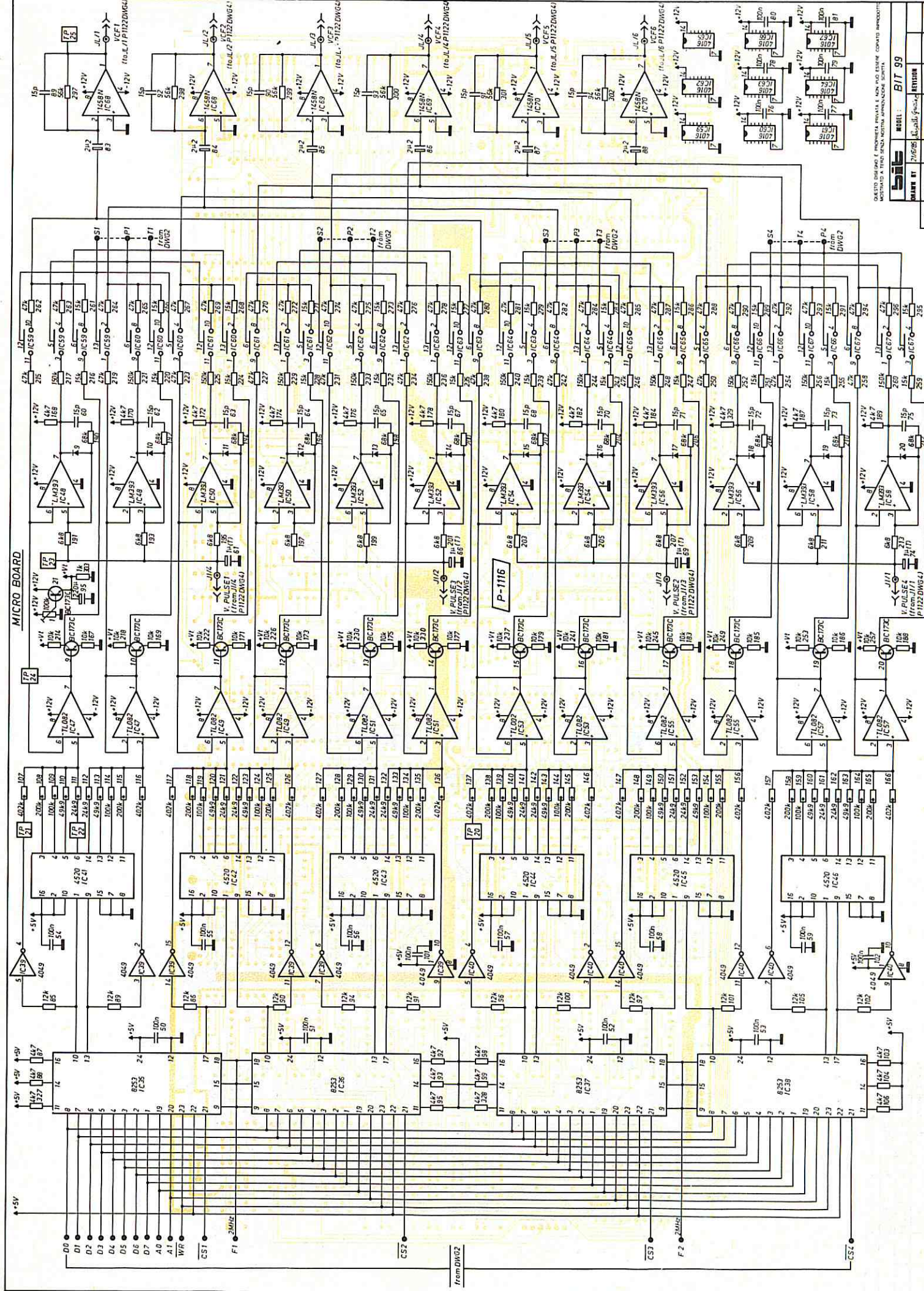
REVISION	DATE
BIT 99	
2	

QUESTO SCHEMATICO È PROPRIO DELLA PIANTA E NON PUÒ ESSERE COPIATO SENZA AVERE LA PERMESSA DELLA PIANTA. SE NE È FATTO UN UNICO E UNICO ESEMPLARE.





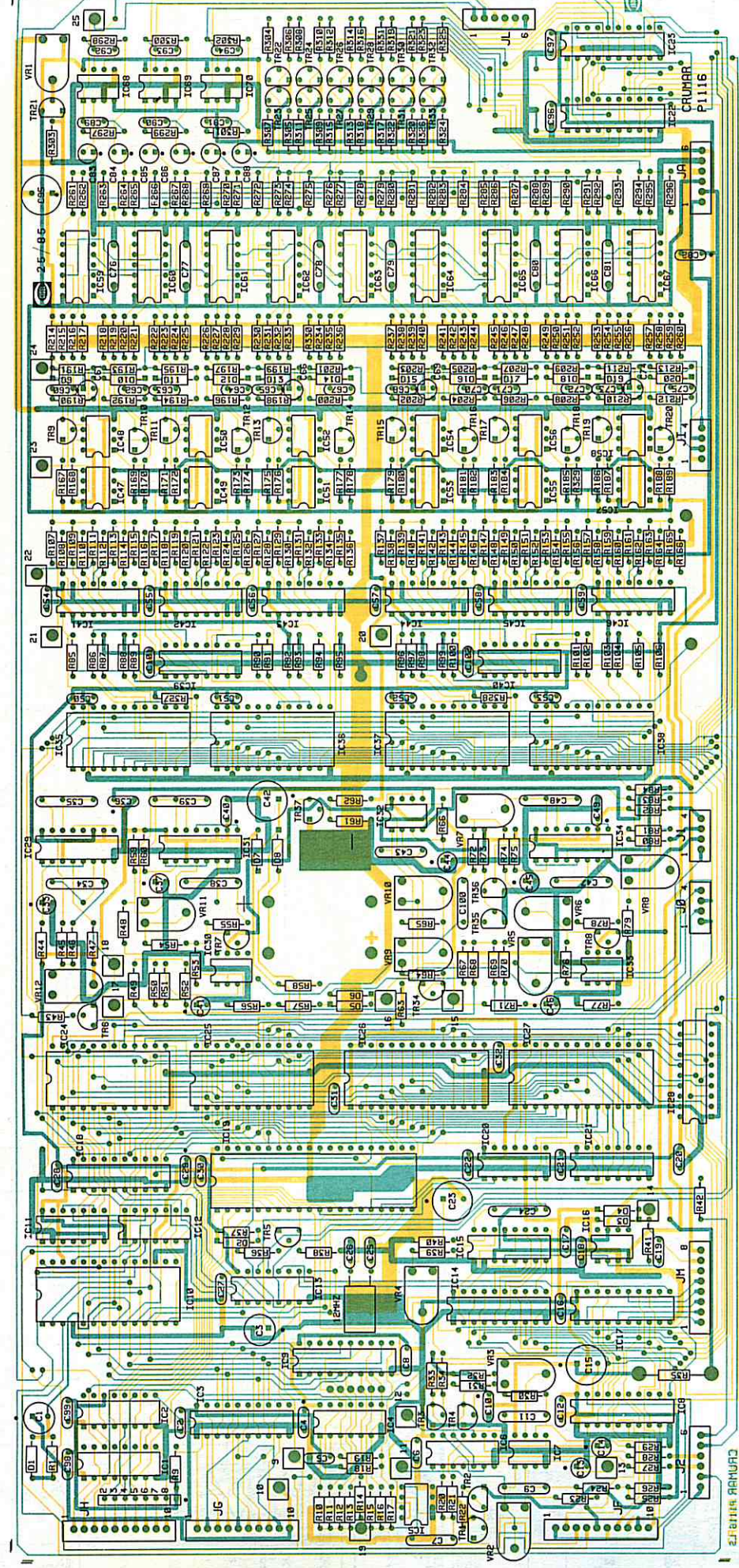
DESIGNED & DEVELOPED BY: **PROGETTAZIONE E SVILUPPO ELETTRONICO S.p.A.**
 AUTOMAZIONE E TRAZIONE INDUSTRIALE - APPROVATA SOSTA



MICRO BOARD

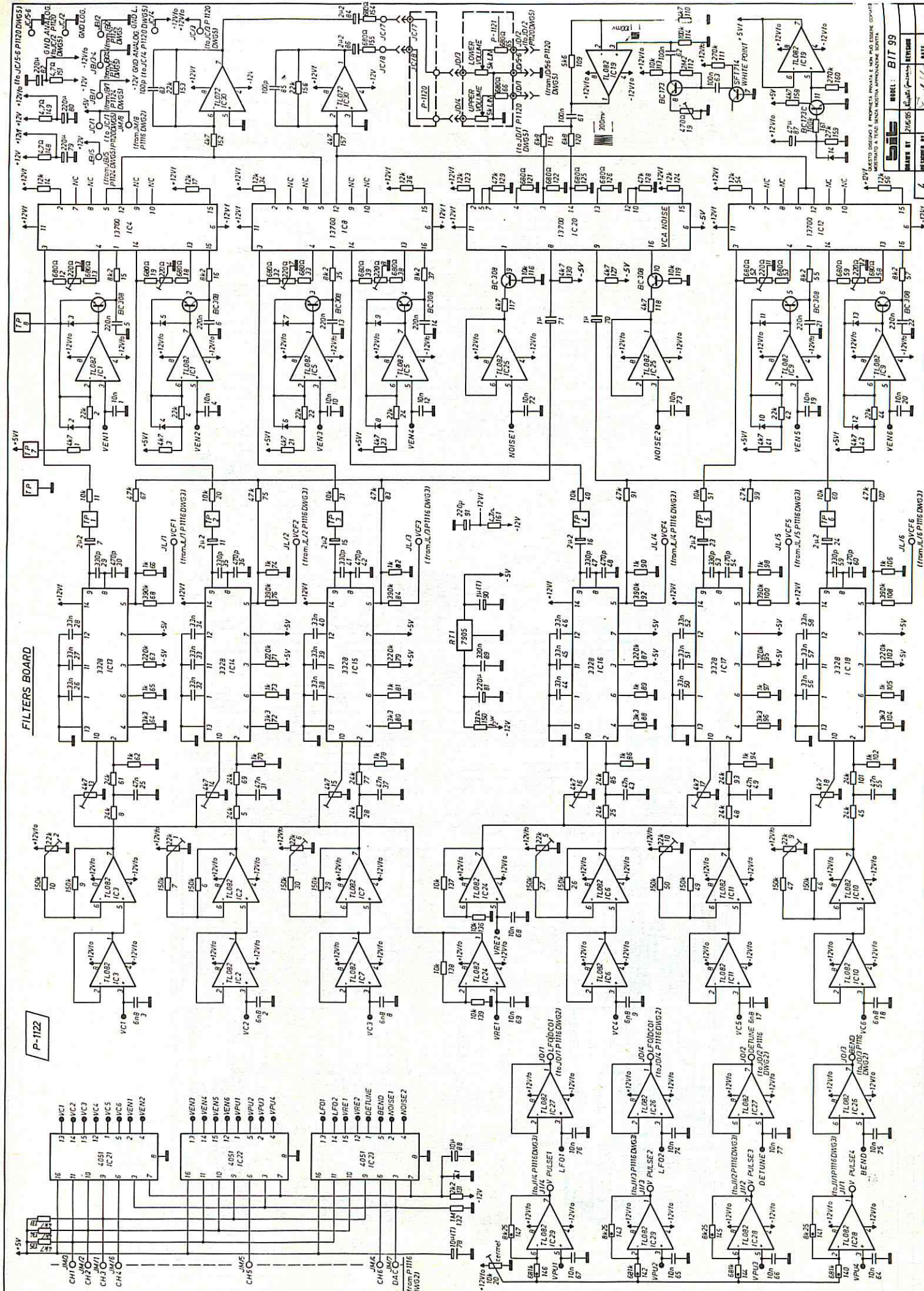
D0 D1 D2 D3 D4 D5 D6 D7 D8 D9 A0 A1 WIP CS1 F1 2MHz CS2 F2 2MHz CS3

From DWG2



QUESTO DISEGNO È PROPRIETÀ PRIVATA E NON PUÒ ESSERE
 RIPRODOTTO SENZA AUTORIZZAZIONE SCRITTA.

MODEL :	BIT 99
DATA :	27/05/85
REVISION :	
DESIGNER :	
DATE :	

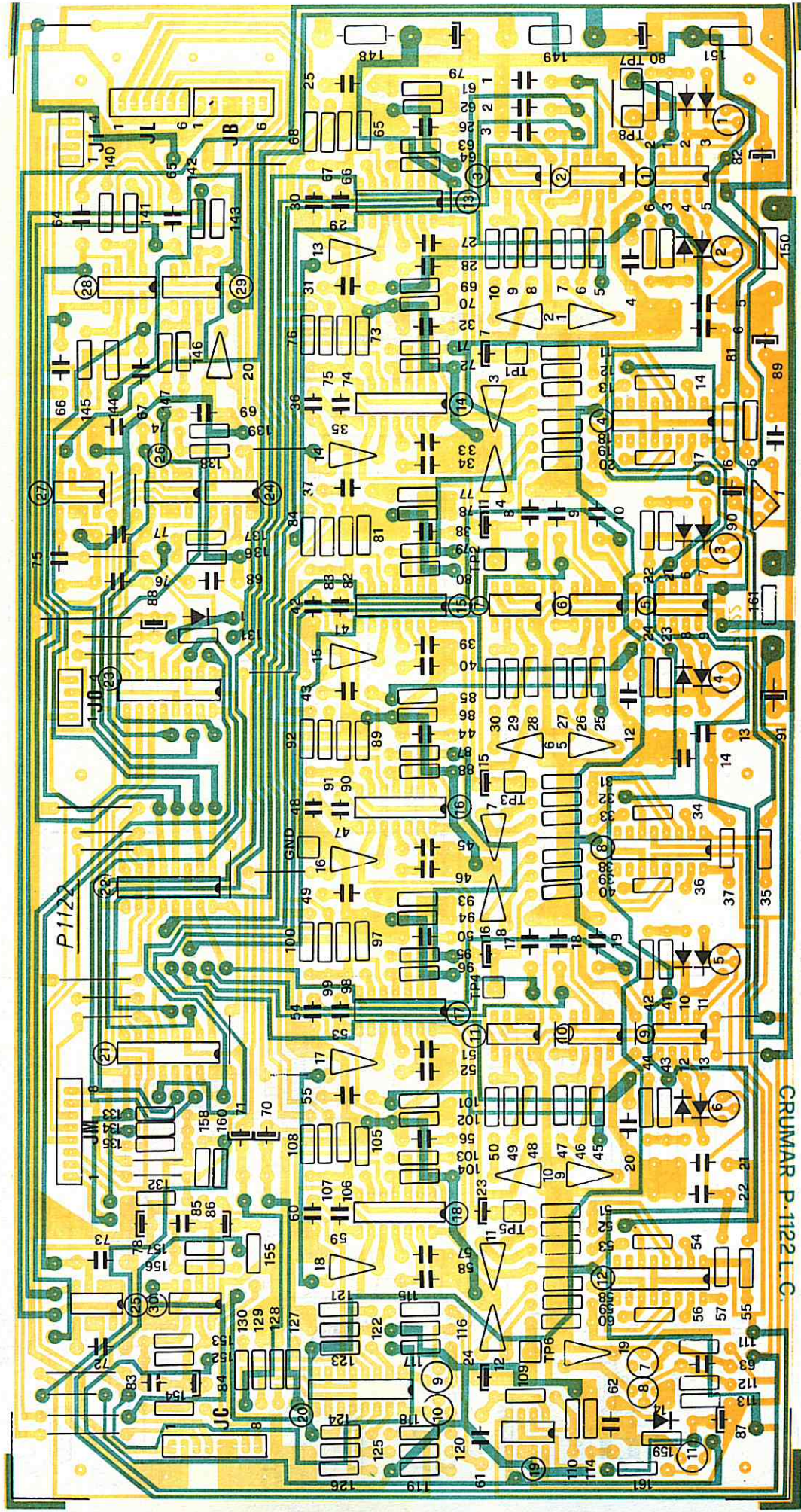


FILTERS BOARD

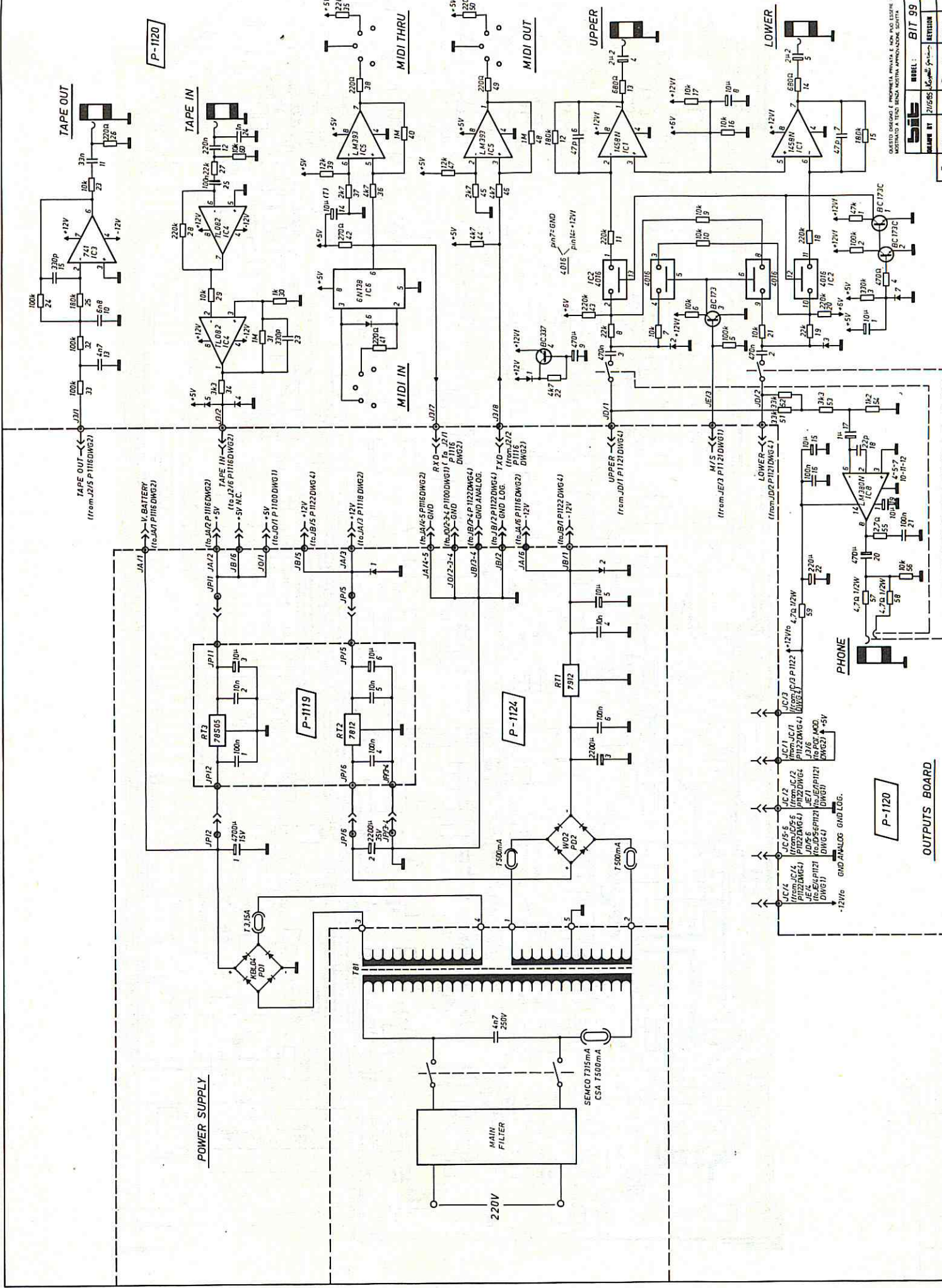
P-1122

DESIGNER	DATE
REVISION	
MODEL	BIT 99
PART NO	21666

QUESTO SCHEMA È PROPIETÀ INTELLETTUALE E NON PUÒ ESSERE COPIATO
 REPRODUCED BY ANY MEANS WITHOUT THE WRITTEN PERMISSION OF THE AUTHOR



CRUMAR P-1122 L.C.



P-1120

P-1119

P-1124

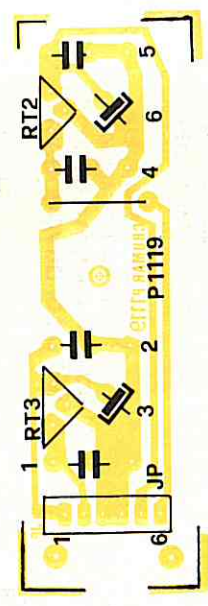
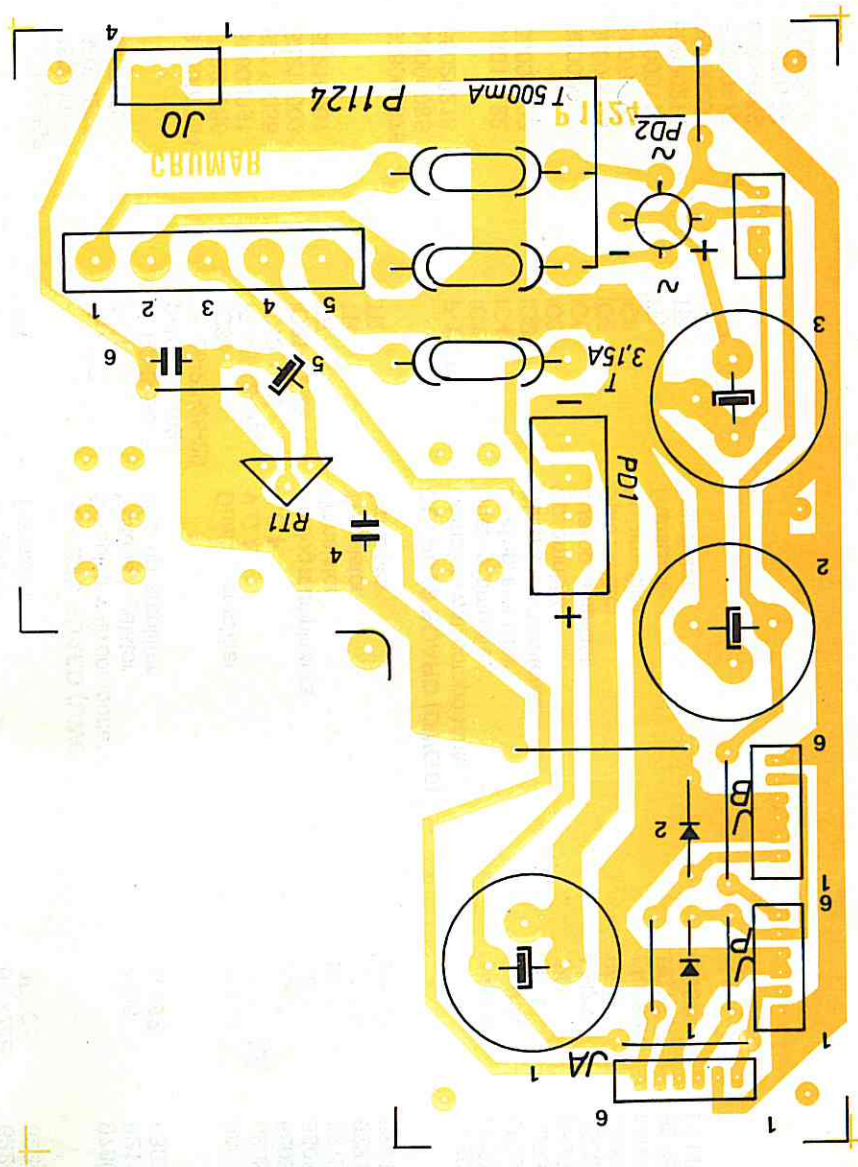
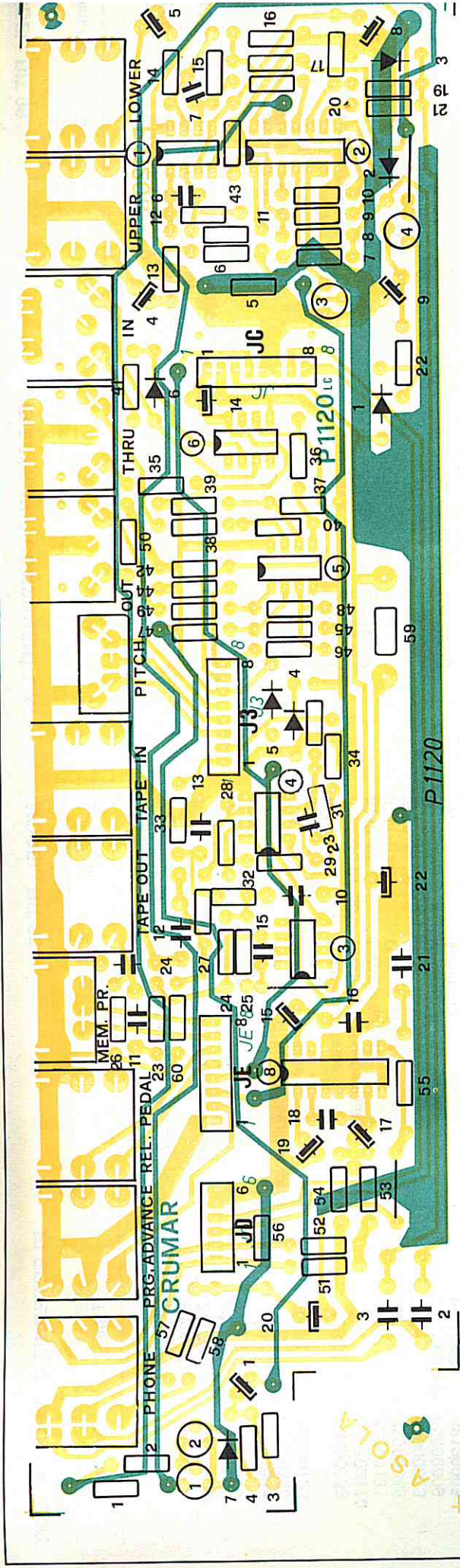
P-1120

OUTPUTS BOARD

PROGETTO INGENIERO E INGOMERIA INVIATA E DONATA ESSE CONSTATO MANCANTO
MONTAVO A TUTTI SENZA ABBONAZIONE SCIENTIA

5	REVISION	DATE
5	REVISION	DATE

BIAS
SERIAL N° 210685
REVISION 5
DATE

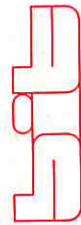


QUESTO DISCOSO È PROPRIETÀ PRIVATA E NON PUÒ ESSERE COPIATO O RIPRODOTTO SENZA IL CONSENSO SCRITTO DI ASOLA.

MODEL: BIT 99
SCALE BY: 2/19/85
REVISION: 1
DATE: 1/2/85

Schem. Ref.	Circuit	Type	Part Code
P-1124	POWER SUPPLY (DWG 5) (Semko) complete with components transformer T81 Semko		978002884
P-1124	(CSA) complete with components transformer T81 C.S.A.		978002885
D1-2	Diodes	1N4001	66000004
PD1	Rectifier bridge	KBL04	66000006
PD2	Rectifier bridge	W02	66000001
RT1	Voltage regulator	7912	62110037
P-1119	Complete with components	7812	978002878
RT2	Voltage regulator	78S05	62110027
RT3	Voltage regulator		62110043
P-1102	DISPLAY'S BOARD (DWG 1) Complete with components double display	MAN6740	978002860 10120016
P-1123	KEY SWITCHES BOARD (DWG 1) Complete with components	4050	978002883
IC1-4-5	Non inverter buffer	TL081	68000085
IC2	Op amplifier	8051	68030205 68070208
IC3	Micro		
P-1121	SWITCHES BOARD (DWG 1) Complete with components		978002881
IC1	Decoder	4511	68000086
IC2	Decoder	4028	68000091
TR	Transistor	BC337	62110038
TR	Transistor	BC172	62210003
TR	Transistor	BC308	62210001
P-1116	MICROBOARD (DWG 2-3) Complete with components		978002875
IC1-2	Non inverter buffers	4050	68000085
IC3-8-9-14-17-22-23	Transparent latch	74LS374	68020213
IC4	Seven stage ripple counter	4024	68010122
IC5-48-50-52	Dual op. amplifier	LM393	68030222
54-56-58	Quad analog. switches	4016	68000072
IC6-59 ÷ 67	Dual op. amplifier	LM358	68000093
IC7	Programmable communication interface	8251	68070227
IC10	Transparent latch	74LS393	68000115
IC11	Transparent latch	74LS373	68020214
IC18	Positive "nand" gate	74LS132	68020206
IC12	Positive "nand" gate	74LS00	68000117
IC20	Decoders and demultiplexers	74LS138	68020153
IC13	Digital analog. converter	DAC0800	68070197
IC15	Op. amplifier	TL081	68030205
IC16-30-33			

Schem. Ref.	Circuit	Type	Part Code
IC19	MICROBOARD (DWG 2-3) Micro	8031	68070209
IC21	Decoder and demultiplexers	74LS139	68020215
IC24-25	Ram	μA449	68070216
IC26	Memory	2764(E)	68040211
IC27	Memory	2764(F)	68040211
IC28	Buffers and drivers 3 state outputs	74LS244	68020225
IC32-47-49	Dual op. amplifier	TL082	68030163
51-53-55-57			
IC31-34	Master oscillator	74LS221	68000058
IC35-36-37-38	Programmable oscillator	8253	680702110
IC39-40	Inverter buffers	4049	68010131
IC41 ÷ 46	Dual up. counters	4520	68000045
IC68-69-70	Dual op. amplifier	1458	68000053
D1-2	Diodes	HSC1001HP	65000009
TR	Transistor	BC173C	62120003
TR	Transistor	BC172B	62210003
TR	Transistor	BC308	62210001
P-1122	FILTERS BOARD (DWG-4) Complete with components		978002882
RT1	Voltage regulator	7905	62110033
IC1-2-3-5-6-7	Dual op. amplifier	TL082	68030163
9-10-11-19-24			
25-26-27-28-29			
IC30	Dual op. amplifier	TL072	68030140
IC4-8-12-20	V.C.A.	LM13700	68030219
IC13 ÷ 18	V.C.F.	3328	68030223
IC21-22-23	Analog multiplexers	4051	68010154
TR	Transistor	BC173C	62120003
TR	Transistor	BC308	62210001
TR	Transistor	SFT714	62210002
P-1120	OUTPUTS BOARD (DWG 5) Complete with components		978002880
IC1	Dual op. amplifier	1458N	68000053
IC4	Dual op. amplifier	TL082	68030163
IC2	Quad analog switches	4016	68000072
IC3	Op. amplifier	741	68000059
IC5	Dual op. amplifier	LM393	68030222
IC6	Opto isolator	6N138	68070220
IC8	Op. amplifier	LM380N	68030203
TR	Transistor	BC173C	62120003
TR	Transistor	BC337	62110038



CHALLENGING TECHNOLOGY

60022 CASTELFIDARDO - ITALY
P.O. Box 98 - Telex: 572666 I